

Parkside

Nature's Neighbour

1, 2 & 3 bedroom apartments

Chestnut Row

Garston, Watford

Thrive
Homes

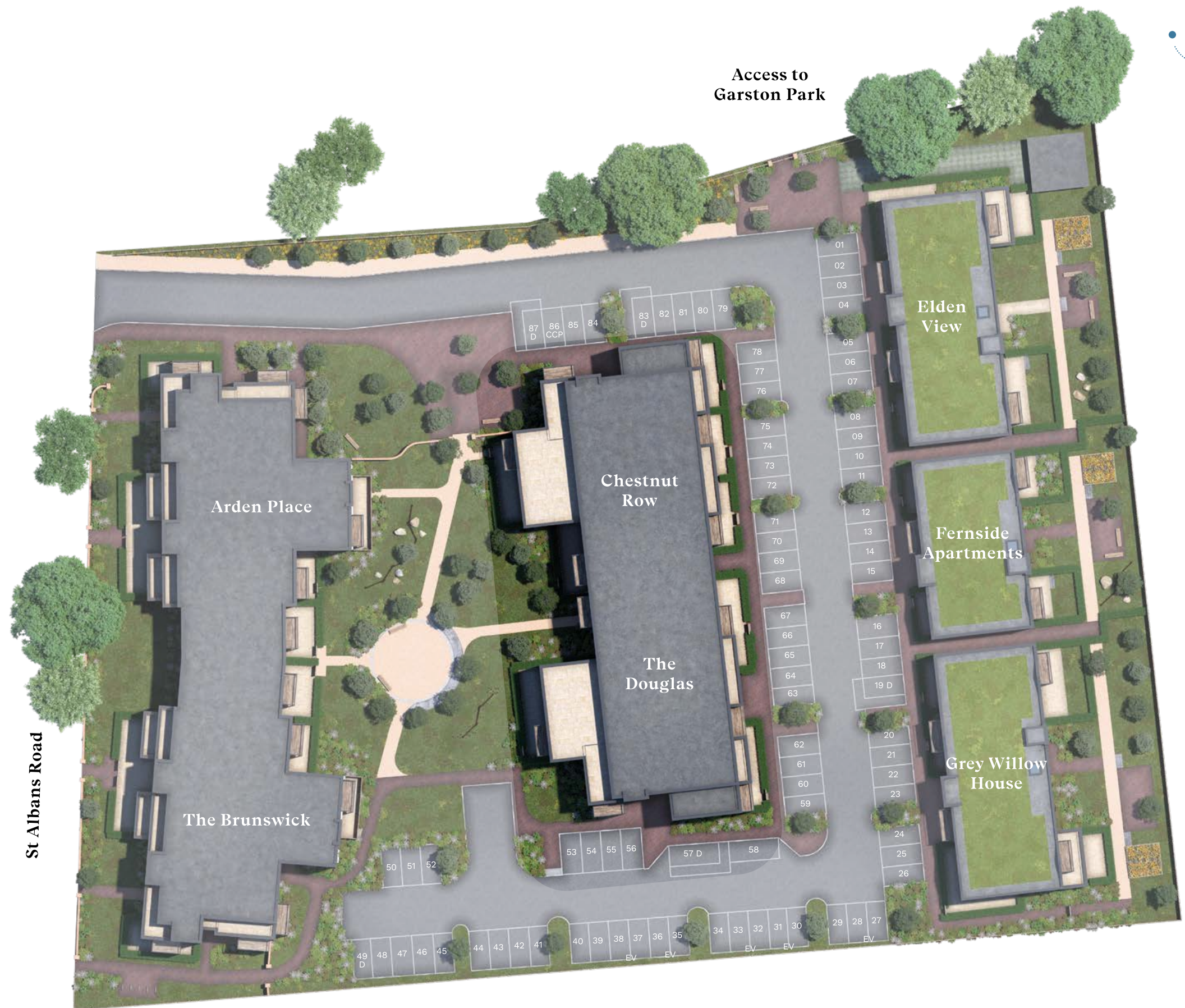
Site Plan



Situated on St Albans Road in Garston, Watford, Parkside is an exceptional new development comprising seven different blocks of 1, 2 & 3 bedroom apartments.

The development benefits from a beautifully landscaped central courtyard, the perfect place to catch some fresh air and mix with your new neighbours.

Furthermore, the development offers direct access to Garston Park, 6.4 hectares of open green space, half of which is a nature reserve, and also includes an outdoor gym, skate park and children's play area. At Parkside you truly are nature's neighbour.



Key

- D Disabled parking space
- CCP Car Club parking space
- EV Electric charging point

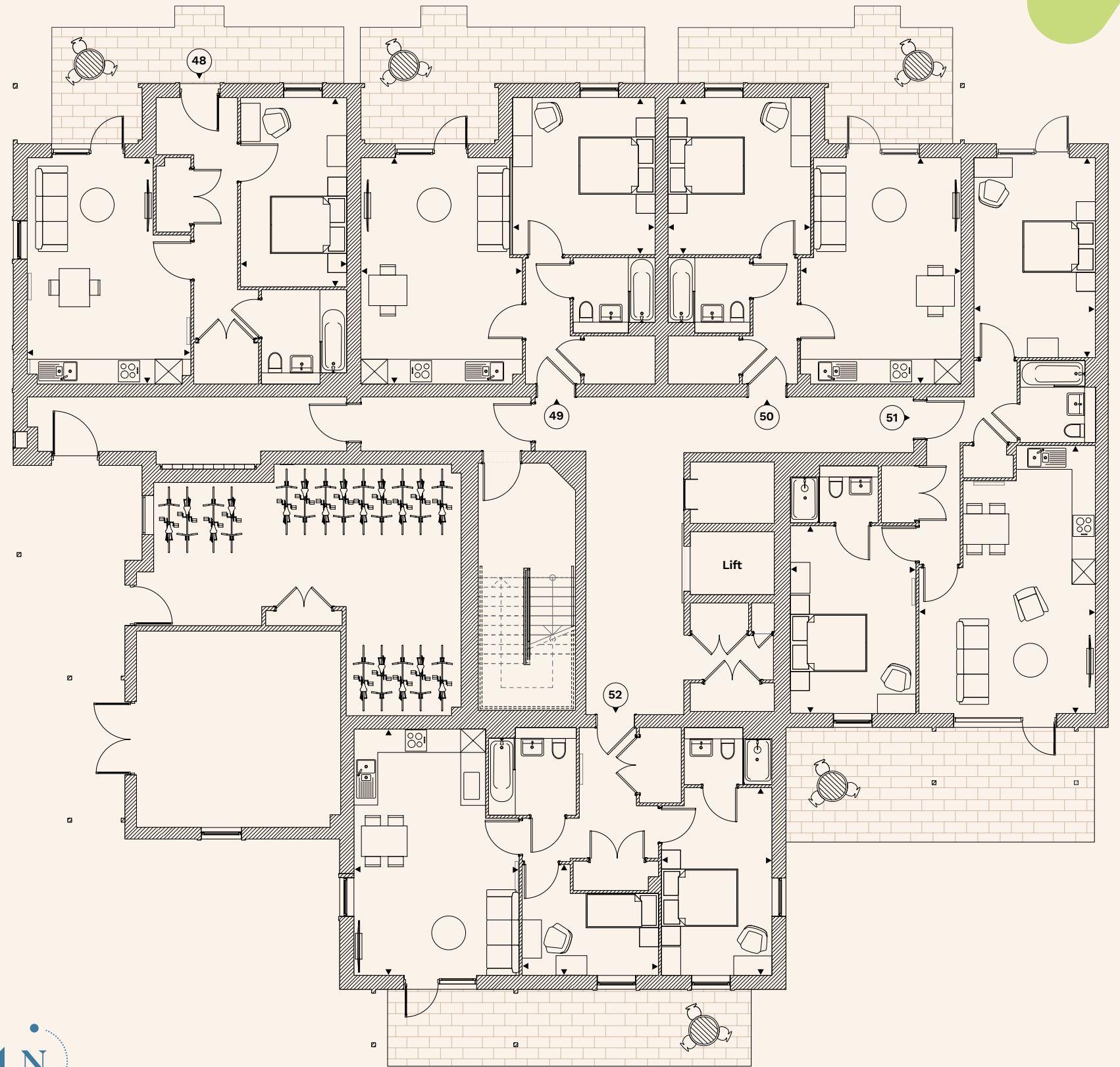
The development layout does not show details of gradients of land, boundary treatments, local authority street lighting or landscaping. It is our intention to build in accordance with this layout. However, there may be occasions when the house designs, boundaries, landscaping and positions of roads and footpaths change as the development proceeds. Please speak to a member of our Sales Team for more details.



Chestnut Row

Ground Floor

Plot: 48	Kitchen, Living & Dining Bedroom Area	5.93m x 4.28m 4.96m x 2.78m 57.5 sq m
Plot: 49	Kitchen, Living & Dining Bedroom Area	5.93m x 4.23m 4.11m x 3.73m 51.6 sq m
Plot: 50	Kitchen, Living & Dining Bedroom Area	5.93m x 4.20m 4.11m x 3.73m 51.6 sq m
Plot: 51	Kitchen, Living & Dining Bedroom 1 Bedroom 2 Area:	7.02m x 4.62m 4.92m x 3.29m 5.23m x 3.18m 80.1 sq m
Plot: 52	Kitchen, Living & Dining Bedroom 1 Bedroom 2 Area:	6.45m x 4.33m 4.92m x 2.89m 3.57m x 2.91m 71.0 sq m

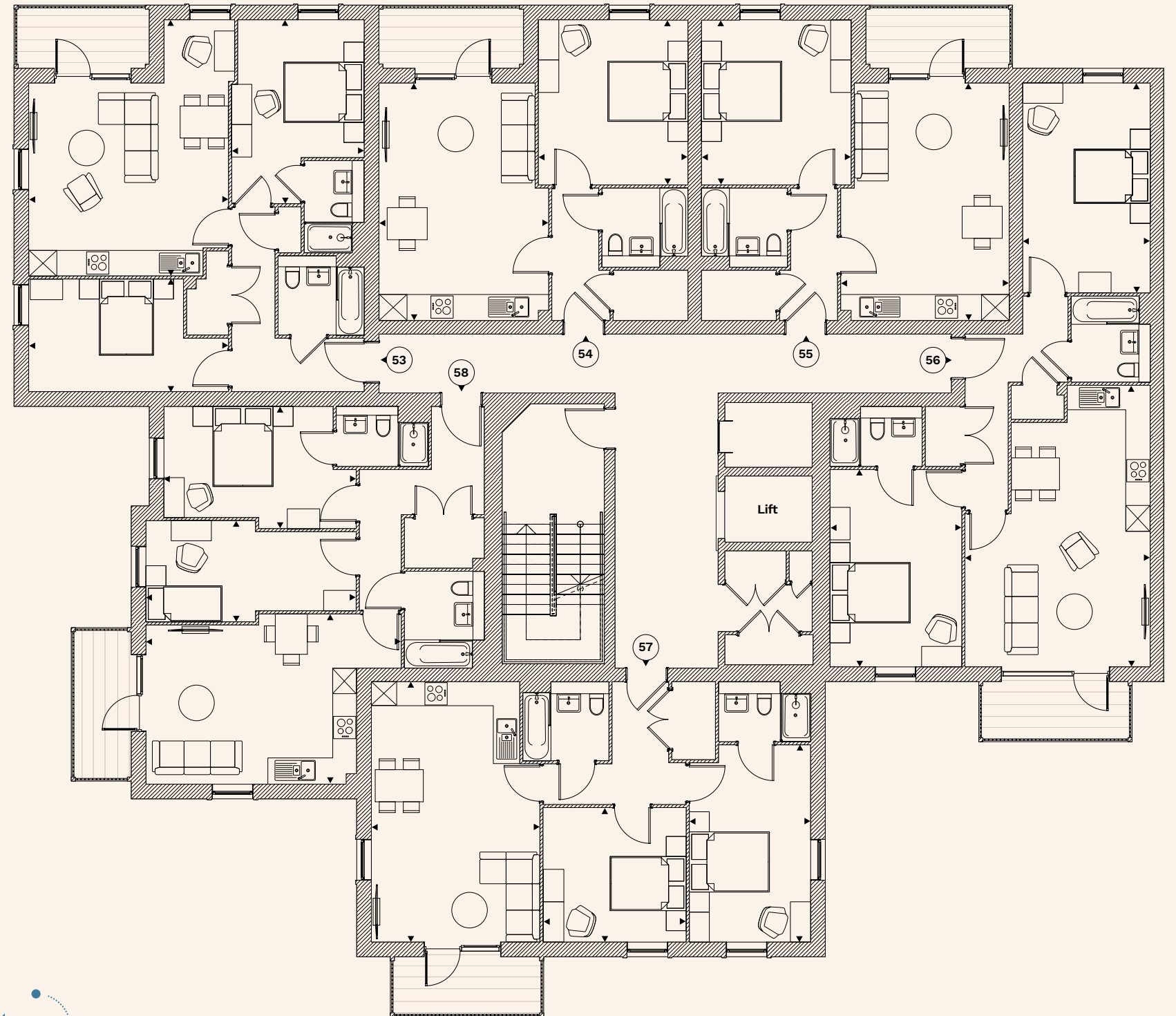


Floorplans shown are indicative only. The kitchen layout and furniture positions are for indicative purposes only. All dimensions indicated are approximate and should not be relied upon for carpet sizes or items of furniture. The developer reserves the right to make changes to these plans prior to exchange of contracts. For exact plot specification, details of external and internal finishes, dimensions and floorplan differences, please speak to a member of our Sales Team for more details.



First Floor

Plot: 53	Kitchen, Living & Dining Bedroom 1 Bedroom 2 Area	6.38m x 4.98m 3.43m x 3.31m 4.98m x 2.81m 72.3 sq m
Plot: 54	Kitchen, Living & Dining Bedroom Area	5.92m x 4.23m 4.11m x 3.73m 51.6 sq m
Plot: 55	Kitchen, Living & Dining Bedroom Area	5.92m x 4.20m 4.11m x 3.73m 51.6 sq m
Plot: 56	Kitchen, Living & Dining Bedroom 1 Bedroom 2 Area	7.02m x 4.62m 4.92m x 3.29m 5.23m x 3.18m 80.1 sq m
Plot: 57	Kitchen, Living & Dining Bedroom 1 Bedroom 2 Area	6.49m x 4.20m 4.92m x 3.02m 3.57m x 3.35m 71.2 sq m
Plot: 58	Kitchen, Living & Dining Bedroom 1 Bedroom 2 Area	6.37m x 4.24m 4.22m x 3.04m 5.24m x 2.52m 69.1 sq m



Floorplans shown are indicative only. The kitchen layout and furniture positions are for indicative purposes only. All dimensions indicated are approximate and should not be relied upon for carpet sizes or items of furniture. The developer reserves the right to make changes to these plans prior to exchange of contracts. For exact plot specification, details of external and internal finishes, dimensions and floorplan differences, please speak to a member of our Sales Team for more details.



Second Floor

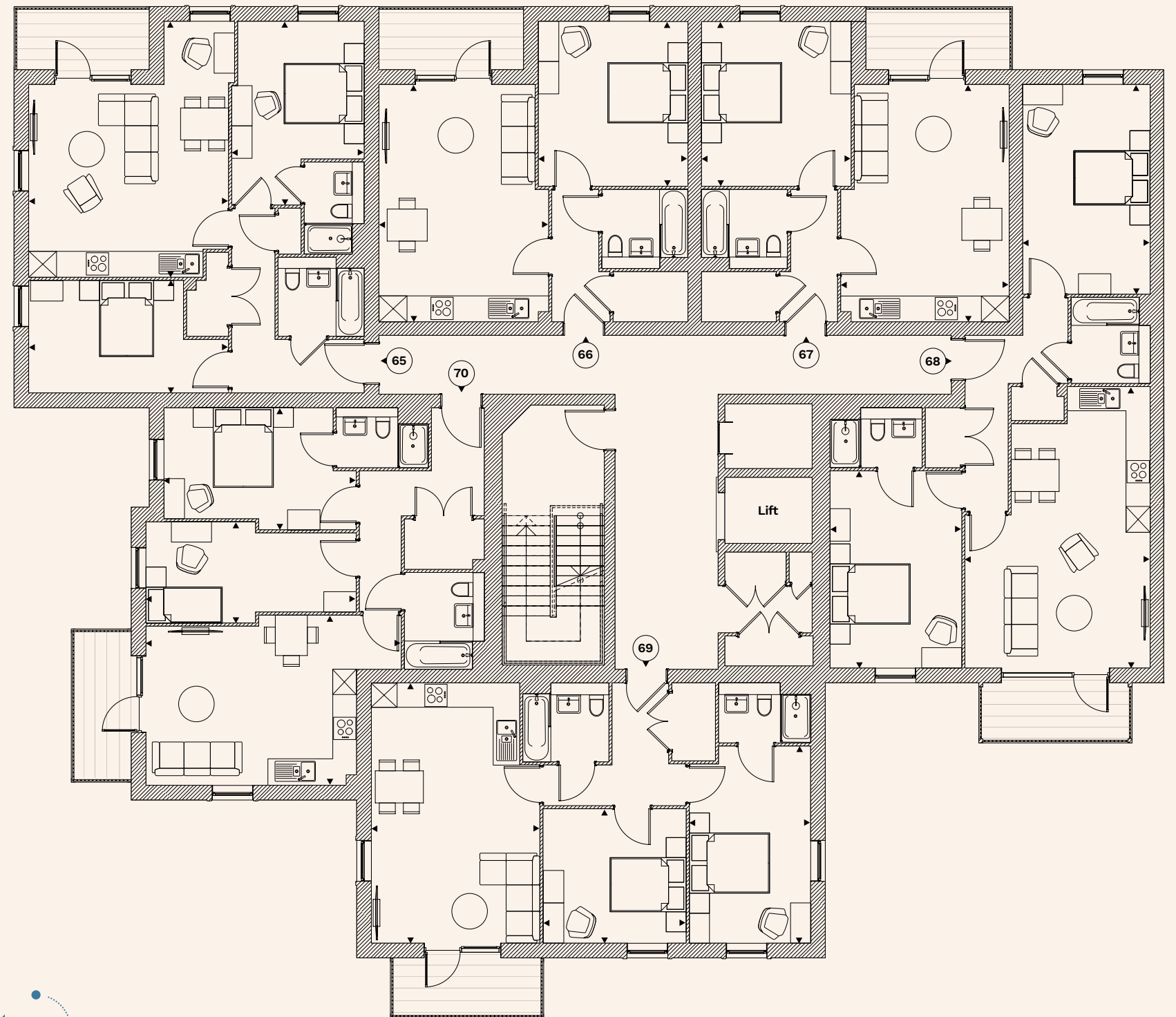
Plot: 59	Kitchen, Living & Dining Bedroom 1 Bedroom 2 Area	6.38m x 4.98m 3.43m x 3.31m 4.98m x 2.81m 72.3 sq m
Plot: 60	Kitchen, Living & Dining Bedroom Area	5.92m x 4.23m 4.11m x 3.73m 51.6 sq m
Plot: 61	Kitchen, Living & Dining Bedroom Area	5.92m x 4.20m 4.11m x 3.73m 51.6 sq m
Plot: 62	Kitchen, Living & Dining Bedroom 1 Bedroom 2 Area	7.02m x 4.62m 4.92m x 3.29m 5.23m x 3.18m 80.1 sq m
Plot: 63	Kitchen, Living & Dining Bedroom 1 Bedroom 2 Area	6.49m x 4.20m 4.92m x 3.02m 3.57m x 3.35m 71.2 sq m
Plot: 64	Kitchen, Living & Dining Bedroom 1 Bedroom 2 Area	6.37m x 4.24m 4.22m x 3.04m 5.24m x 2.52m 69.1 sq m



Floorplans shown are indicative only. The kitchen layout and furniture positions are for indicative purposes only. All dimensions indicated are approximate and should not be relied upon for carpet sizes or items of furniture. The developer reserves the right to make changes to these plans prior to exchange of contracts. For exact plot specification, details of external and internal finishes, dimensions and floorplan differences, please speak to a member of our Sales Team for more details.

Third Floor

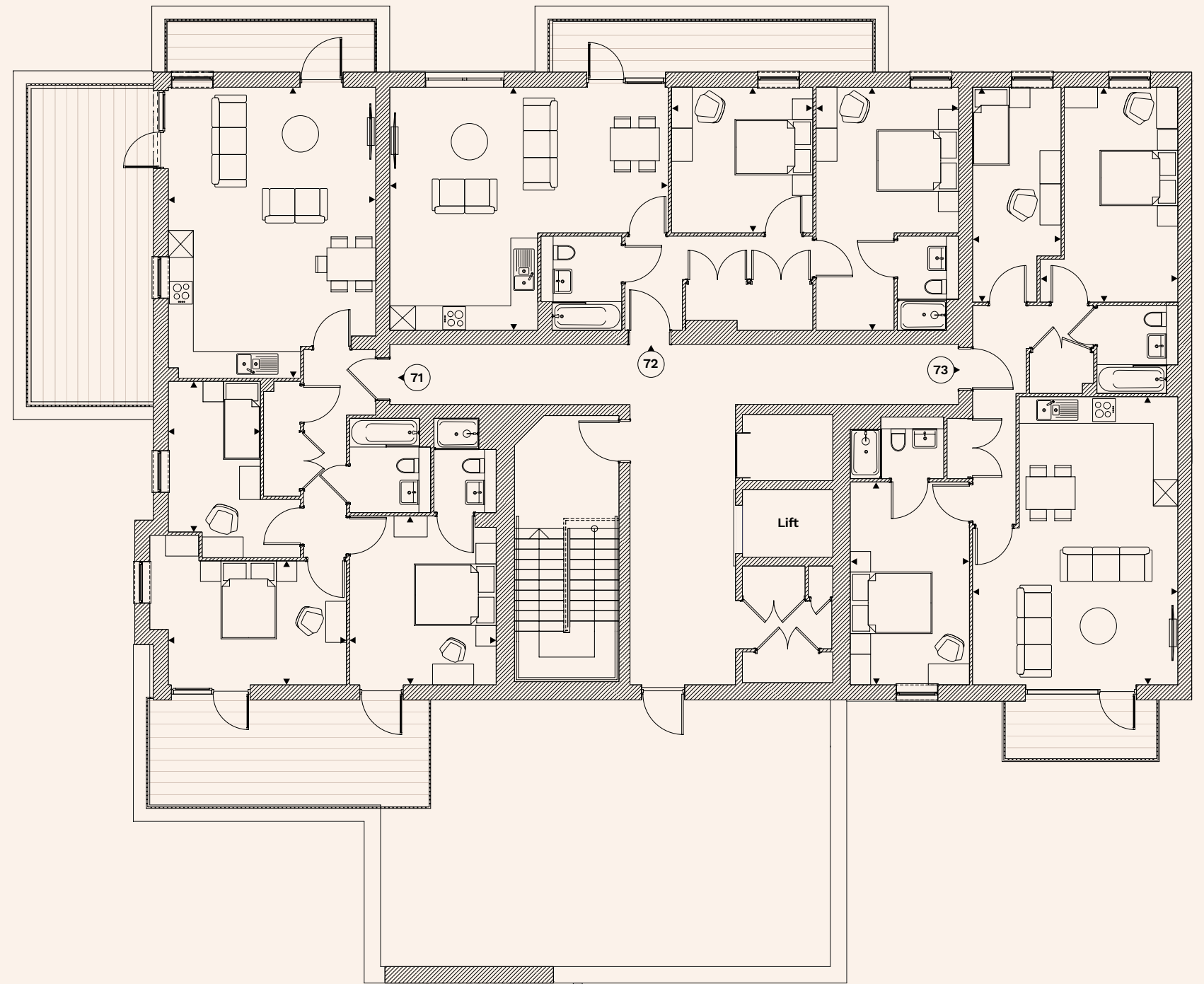
Plot: 65	Kitchen, Living & Dining Bedroom 1 Bedroom 2 Area	6.38m x 4.98m 3.43m x 3.31m 4.98m x 2.81m 72.3 sq m
Plot: 66	Kitchen, Living & Dining Bedroom Area	5.92m x 4.23m 4.11m x 3.73m 51.6 sq m
Plot: 67	Kitchen, Living & Dining Bedroom Area	5.92m x 4.20m 4.11m x 3.73m 51.6 sq m
Plot: 68	Kitchen, Living & Dining Bedroom 1 Bedroom 2 Area	7.02m x 4.62m 4.92m x 3.29m 5.23m x 3.18m 80.1 sq m
Plot: 69	Kitchen, Living & Dining Bedroom 1 Bedroom 2 Area	6.49m x 4.20m 4.92m x 3.02m 3.57m x 3.35m 71.2 sq m
Plot: 70	Kitchen, Living & Dining Bedroom 1 Bedroom 2 Area	6.37m x 4.24m 4.22m x 3.04m 5.24m x 2.52m 69.1 sq m



Floorplans shown are indicative only. The kitchen layout and furniture positions are for indicative purposes only. All dimensions indicated are approximate and should not be relied upon for carpet sizes or items of furniture. The developer reserves the right to make changes to these plans prior to exchange of contracts. For exact plot specification, details of external and internal finishes, dimensions and floorplan differences, please speak to a member of our Sales Team for more details.

Fourth Floor

Plot: 71	Kitchen, Living & Dining	7.15m x 5.12m
	Bedroom 1	4.18m x 3.57m
	Bedroom 2	4.41m x 3.08m
	Bedroom 3	3.67m x 2.31m
	Area	93.8 sq m
Plot: 72	Kitchen, Living & Dining	6.79m x 5.98m
	Bedroom 1	5.98m x 3.48m
	Bedroom 2	3.61m x 3.45m
	Area	82.2 sq m
Plot: 73	Kitchen, Living & Dining	7.02m x 5.00m
	Bedroom 1	4.94m x 2.90m
	Bedroom 2	5.30m x 3.35m
	Bedroom 3	5.30m x 2.16m
	Area	92.3 sq m



Floorplans shown are indicative only. The kitchen layout and furniture positions are for indicative purposes only. All dimensions indicated are approximate and should not be relied upon for carpet sizes or items of furniture. The developer reserves the right to make changes to these plans prior to exchange of contracts. For exact plot specification, details of external and internal finishes, dimensions and floorplan differences, please speak to a member of our Sales Team for more details.



A stylized graphic featuring a white sun with rays on the left, set against a background of overlapping green and light blue shapes that resemble foliage or waves. The sun has a central circle and several teardrop-shaped rays radiating outwards. The background consists of various shades of green and light blue, creating a layered, organic effect.

Thrive Homes

Parkside, St Albans Road,
Watford, WD25 9NN

All content within this document is indicative only. Thrive Homes reserves the right to make any changes at any time. Please speak to a member of our Sales Team for up-to-date information when reserving your new home. Information is correct at the time of going to print. May 2024.